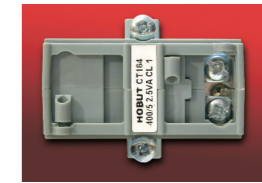
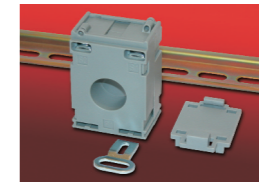


# HOBUT

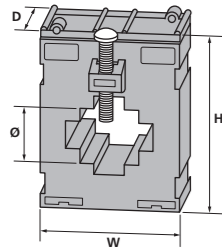
# MOULDED CASE CURRENT TRANSFORMERS

Many more current transformers can also be seen on our web site [www.hobut.co.uk](http://www.hobut.co.uk)

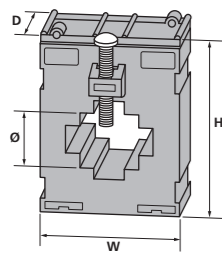
DIN rail mount  
and foot mount



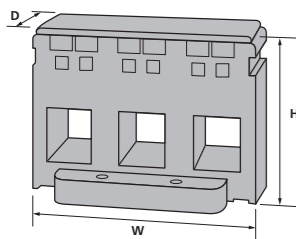
Sealable  
terminal covers



	13 SERIES TYPE 132	14 SERIES TYPE 141    TYPE 143			TYPE 160	TYPE 162	TYPE 162D	16 SERIES TYPE 163    TYPE 163D		TYPE 164	TYPE 164D	TYPE 173	17 SERIES TYPE 174	TYPE 175
Max. Cable Dia. (mm) Ø	21	15	24	–	20	20	17	24	28	28	24	30	40	
Busbars (mm)	–	–	30 x 10 20 x 20	WOUND PRIMARY	20 x 10	20 x 10	30 x 15 20 x 15	30 x 10 20 x 20	40 x 10 30 x 10	40 x 10 30 x 10	20 x 20 30 x 15	40 x 10 30 x 30	50 x 10 40 x 30	
Dimensions (mm)	H	65	70	70	85	78	78	78	78	78	95	95	95	
	W	45	49	49	60	60	60	60	60	60	70	70	70	
	D	30	43	30	43	30	55	30	55	30	55	40	40	
DIN Rail Mount	●	●	●	●	●	–	●	–	●	–	–	–	–	
<b>PRIMARY CURRENT</b>	40A / 300A	25A / 125A	60A / 600A	1A / 60A	30A / 250A	30A / 250A	50A / 500A	50A / 600A	100A / 800A	100A / 800A	40A / 1200A	40A / 1200A	250A / 1200A	



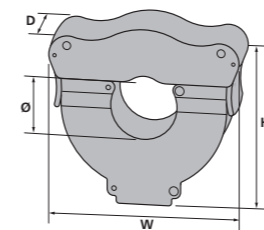
	18 SERIES TYPE 186	19 SERIES TYPE 196	20 SERIES TYPE 206    TYPE 208		21 SERIES TYPE 21	101L SERIES TYPE CTH101L	127 SERIES TYPE CTH127M    TYPE CTH127L		RECTANGULAR MOULDED CASE TYPE CTV65    TYPE CTV84    TYPE CTV105    TYPE CTV127M    TYPE CTV127L					
Max. Cable Dia. (mm) Ø	45	–	60	60	85	–	–	–	–	–	–	–	–	
Busbars (mm)	60 x 15 50 x 30	60 x 30	60 x 30 50 x 50	80 x 10 60 x 30	100 x 30 80 x 50	100 x 55	127 x 38	127 x 54	65 x 32	84 x 34	105 x 38	127 x 38	127 x 54	
Dimensions (mm)	H	108	126	124	124	160	144	115	140	113	135	156	178	178
	W	85	90	100	100	135	129	160	160	90	96	98	98	125
	D	30	45	40	40	40	40	40	40	45	40	40	40	40
DIN Rail Mount	–	–	–	–	–	–	–	–	–	–	–	–	–	
<b>PRIMARY CURRENT</b>	400A / 1600A	400A / 1600A	400A / 2000A	400A / 2000A	400A / 4000A	600A / 4000A	400A / 4000A	400A / 6000A	150A / 2000A	150A / 2500A	200A / 4000A	400A / 4000A	400A / 6000A	



	3 PHASE TYPE CT75    TYPE CT105F    TYPE CT140F		
Max. Cable Dia. (mm) Ø	16	21	25 or 31
Busbars (mm)	16mm APERTURES	21mm APERTURES	25mm or 31mm APERTURES
Dimensions (mm)	H	80	79
	W	75	105
	D	60	38
DIN Rail Mount	–	OPTION	OPTION
<b>PRIMARY CURRENT</b>	60A / 160A	100A / 250A	250A / 600A

## SPLIT-CORE CURRENT TRANSFORMERS

The Hobut range of split-core current transformers has been designed to meet the growing demand for installation into existing networks. The split-core allows installation without disconnecting cables. The products are ideal for retro-fitting and are therefore popular in the energy management and power factor correction industries.



	MICRO 19 CTSCMICRO19	CLIP-TOGETHER CTSCM40	MULTI RATIO SIZE 1	MULTI RATIO SIZE 2
Max. Cable Dia. (mm) Ø	19	40	40	65
Busbars (mm)	–	–	–	–
Dimensions (mm)	H	78	113	125
	W	49	116	132
	D	58	36	40
<b>PRIMARY CURRENT</b>	100A / 250A	100A / 800A	100A / 400A	200A / 1000A

All current transformers are supplied as standard with 5A secondary. 1A secondary available by request.  
A range of accuracies are available including class 3, class 1, class 0.5, class 0.5S, class 0.2, class 0.2S, class 5P protection, and Class PX to IEC 61869-2.